



本页：这栋位于曼哈顿的公寓是艺术家Robert Kelly与其爱侣、摄影师Shiripe Gill的家。Kelly本人创作的艺术作品就是对墙壁和地面的完美点缀。
右页：起居室中摆放着美国画家Ray Parker的作品“Black Orb”(1956)以及Robert Kelly的绘画作品；地上摆放着土耳其花瓶，瓷碗购自西班牙，“瓦西里椅子”(1925/1926)由Marcel Breuer设计。

DUAL OCCUPANCY

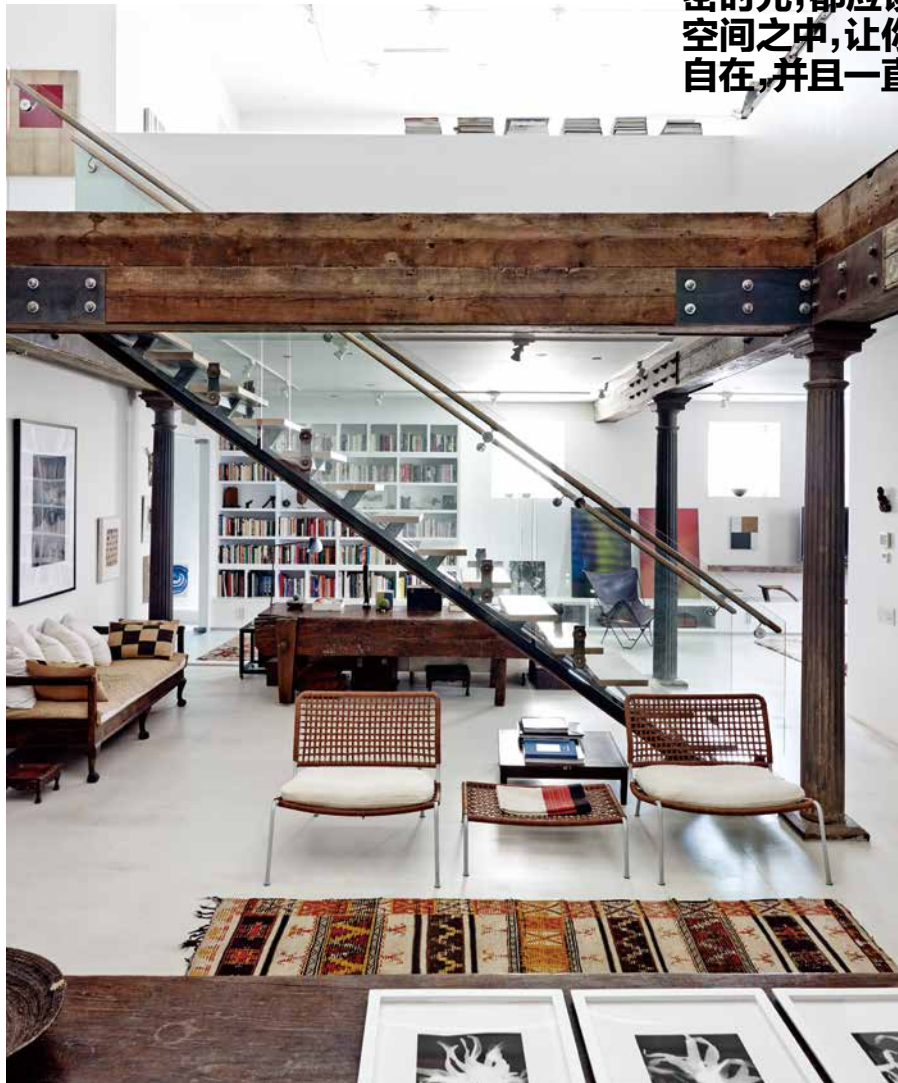


两个人的世外桃源

美国画家ROBERT KELLY用丰富的艺术作品和20世纪50年代的经典家具,将一栋位于曼哈顿的老公寓改造成了一个富有创意的私密休闲港湾。家对于他和伴侣来说就如世外桃源,沉淀着工作和生活的记忆。

摄影: WICHMANN+BENDTSEN 撰文:HELLE WALSTED

“家是沉淀记忆的地方,无论是独处,还是与家人共享亲密时光,都应该深植于家庭空间之中,让你感到舒适和自在,并且一直延续下去。”



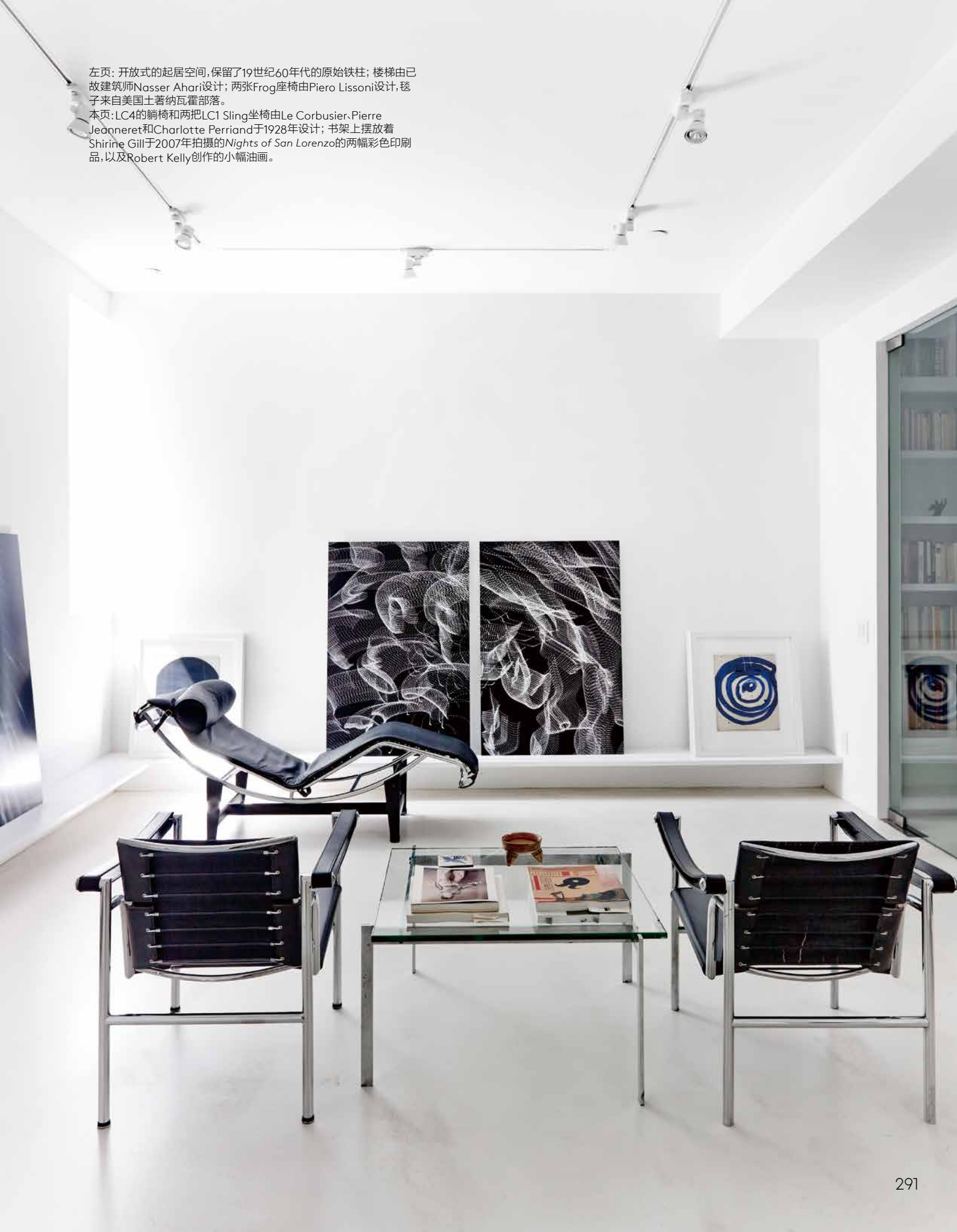
在艺术家Robert Kelly位于洛杉矶的公寓中,竖立着几根制作于19世纪60年代的铁柱,屋顶有外露的木梁,为Kelly备受好评的绘画作品提供了完美的背景。

这栋两层高的公寓面积超过400平方米,位于一座老建筑中,这里曾是纽约下东区德国移民的社区活动中心。对面就是Bowery社区。城市翻新的脚步虽然已经迈进这片地区,但远不及Kelly之前居住的Tribeca社区那样彻底。

对于Kelly和他的爱侣Shirine Gill来说,这片空间不仅是他们的家,也是画廊和工作室,他们自己的作品自然会出现在空间的

各个角落。在家具方面,他们精心挑选了很多20世纪50年代Poul Kjaerholm、Le Corbusier、Eileen Gray、Marcel Breuer和Piero Lissoni等设计师的作品,充分展示了他们对设计的满腔热情。此外,还有一些并非出自名家之手的物品,不仅反映了他们与众不同的审美,同时还是某段人生轨迹的纪念。比如在起居室中,Kelly的绘画作品下方摆有一把19世纪的杨木椅子,还有一张当作饭桌的二战时期绘图桌。为了将这些完全不同的元素和谐地整合在一个空间之内,白色地板上点缀着暖色调的部落风格编织地毯。Kelly的住宅如他的艺术作品一样,通过对线条、形式和色彩的不懈探索 and 追求,显

左页: 开放式的起居空间,保留了19世纪60年代的原始铁柱; 楼梯由已故建筑师Nasser Ahari设计; 两张Frog座椅由Piero Lissoni设计, 毯子来自美国土著纳瓦霍部落。
本页: LC4的躺椅和两把LC1 Sling座椅由Le Corbusier、Pierre Jeanneret和Charlotte Perriand于1928年设计; 书架上摆放着Shirine Gill于2007年拍摄的*Nights of San Lorenzo*的两幅彩色印刷品,以及Robert Kelly创作的小幅油画。





1.厨房设计出自Nasser Ahari之手,黑色花岗岩台面选自Walker Zanger品牌;烤箱来自Sub-Zero品牌,抽油烟机来自Miele品牌;墙上是Kelly的作品*Mimesis LXV (Weatherman)*;Roquebrune椅子由Eileen Gray设计。2.独具纽约特色的户外消防梯。3.Kaare Klint设计的游猎椅上摆着野口勇设计的台灯。4.艺术家位于长岛的工作室,左侧黑色绘画作品来自Kelly创作的“Palos Quemados”系列,右侧是一幅尚未完成的黑白色绘画作品;凳子产自非洲。5.墙上挂着Valdir Cruz的亚诺玛米男孩摄影作品。6.Le Corbusier设计的LC2沙发和Eames办公椅;墙上挂着Elizabeth Peyton创作的Georgia O'Keeffe年轻时代的肖像画。7.古老的墨西哥教堂长椅,长椅上方是Robert Kelly的作品。8.房屋主人Robert Kelly,他身后是自己创作的“Mimesis”系列油画。





“当你生活中的家具、摆设和艺术品刻满了儿时的记忆和旅行的印记,就会谱写出一个鲜活而灵动的生活乐章,成为你人生故事的一部分,成为你诠释艺术和生活的一部分。”

示了融合不同元素的无限装饰潜力。艺术家这样评价他的家：“这是一个宁静的避风港,是工作和生活的世外桃源。所在的社区仍然保留着自己的特色,仍然带着独树一帜而又原始粗放的味道。同时,还拥有许多令人赞不绝口的餐厅和令人振奋的活力。”

这座建筑也曾小有名气,不仅在20世纪50年代经典电视剧*The Honeymooners*的几集中出现, Martin Scorsese的名作*Raging Bull*也曾在此取景。2002年,他们刚刚买下这栋公寓时,房子的地下室阴暗潮湿,一层空空如也。经过与已故建筑师朋友 Nasser Ahari共同努力对其进行彻底改造,公寓摇身一变,成为一

个明亮而富于极简主义特色的住宅和工作室。公寓面积很大,这三个人将其打造成繁华都市中的一抹绿洲,一片宁静的世外桃源,同时又保留了独一无二的曼哈顿味道。

开放式的室内空间建筑细部将历史和现代、原始和简约的元素完美地融合在一起。除了外露的横梁和铁柱,建筑中心位置还有一个以玻璃和木材打造的楼梯。墙壁部分用白漆粉刷,而部分裸砖墙呈现出经典的纽约仓库般的风格和效果。

为了让地板呈现出闪亮的效果,Kelly和助手亲自上阵,承担了在地面上涂刷白漆的“重任”。然后他们在上面铺上桦木家具胶合



本页: Kelly在工作室中, LC2椅子是Le Corbusier的作品。
右页: 主卧室的床由Design Within Reach公司制作, 床单布料购自加纳, 墙上是Shirine Gill的摄影作品。

“我们会与彼此分享,对艺术、文化和旅行的热爱是我们一直以来的关注焦点。共同构建居所的过程,就像是将这些记忆储存在一起,让爱的根基更加深入土壤的过程。”



板,再涂上一层水基聚氨酯保护层。地板呈现出的效果正是Kelly在装修过程中亲力亲为的最佳佐证。他认为,所有细节都要以独具个性的方式相互衬托。比如,他在20世纪70年代旅行时淘来的丹麦家具,或是那些来自墨西哥、泰国和北非的特色物品。Kelly说:“家是沉淀记忆的地方,无论是独处,还是与家人共享亲密时光,都应该深植于家庭空间之中,让你感到舒适和自在,并且一直延续下去。”

Kelly在新墨西哥州的圣菲长大,那里的文化气息非常浓郁,融入了来自西班牙和美国土著的历史传承。在那片天高地阔的世界中,处处可见质朴的土坯墙,四季分明。尽管他在纽约生活多年,但

内心仍然与故乡紧密相连。他说:“当你生活中的家具、摆设和艺术品刻满了儿时的记忆和旅行的印记,就会谱写出一个鲜活而灵动的生活乐章,成为你人生故事的一部分,成为你诠释艺术和生活的一部分。”

对于这对夫妻,艺术和生活已成为一个不可分割的整体。Kelly的作品已被惠特尼美国艺术馆等博物馆收藏。Kelly说:“我们会与彼此分享,对艺术、文化和旅行的热爱是我们一直以来的关注焦点。共同构建居所的过程,就像是将这些记忆储存在一起,让爱的根基更加深入土壤的过程。”



THIS PAGE: In the Manhattan apartment artist Robert Kelly shares with his partner, photographer Shirine Gill, his own artworks take up space on the walls and floor. OPPOSITE PAGE: in the living area, Black Orb (1956) by American painter RAY PARKER and other artworks by Robert Kelly; Turkish vase and Spanish ceramic bowl; 'Wassily' chair (1925/26) by MARCEL BREUER. Details, last pages.

DUAL OCCUPANCY

Brimming with art and 1950s furniture classics, the historic Manhattan apartment of American painter Robert Kelly has been transformed into a private and creative retreat.



By HELLE WALSTED Photographed by WICHMANN + BENDTSEN



THIS PAGE: in the open-plan living space; original 1860s iron pillars; staircase designed by the late architect Nasser Abari; pair of 'Frog' armchairs by PIERO LISSONI; Navajo rug. OPPOSITE PAGE: 'LC4' chaise longue and two 'LC1 Sling' chairs, both designed in 1928 by LE CORBUSIER, PIERRE JEANNERET and CHARLOTTE PERRIAND; on the shelf, two pigment prints of Nights of San Lorenzo (2007) by SHIRINE GILL and a smaller painting by ROBERT KELLY.

The interior architecture of artist Robert Kelly's Manhattan apartment, with its imposing original 1860s iron pillars and exposed beams, provides the perfect backdrop for Kelly's sought-after paintings.

The apartment covers more than 400 square metres over two floors in a historic building originally used as a community house for immigrant Germans living on the Lower East Side. Just off from the Bowery, it's an area that hasn't yet been gentrified to the extent of Kelly's old neighbourhood, Tribeca.

The space serves as a gallery and studio as well as a home to both Kelly and his partner, photographer Shirine Gill. Their own work is of course displayed around the house and their passion for design shows in the carefully curated collection of 1950s classic furniture by designers such as Poul Kjaerholm, Le Corbusier, Eileen Gray, Marcel Breuer and Piero Lissoni. Juxtaposed with these are no-name pieces chosen for their quirks or backstories. In the living room, for instance, a 19th-century cottonwood workbench sits under one of Kelly's paintings, while a World War II drafting table is used for dining. To bring it all together, woven tribal rugs in warm colours are spread across the whitewashed floor. Kelly's home is like his art, exploring line, form, colour and the endless possibilities of their juxtapositions.

"This home is a quiet retreat, a work/life sanctuary," says the artist. "It is in a neighbourhood still forming its identity; still edgy, gritty, yet with great restaurants and rambling energy."

The building itself has had its 15 minutes of fame, used as a location for several episodes of the classic 1950s TV comedy *The Honeymooners* and scenes in Martin Scorsese's *Raging Bull*. After buying the apartment in 2002, the couple and a friend, the late architect Nasser Ahari, worked to transform what was a dark, damp basement and an empty first floor into a bright and minimalist home and studio. Despite its overwhelming size, the trio managed to create a tranquil retreat from the buzzing city outside, while maintaining a distinct Manhattan vibe.

The architectural details of the open-plan interiors combine elements old and new, rustic and minimalist. Along with the exposed beams and iron pillars, an open-tread timber-and-glass staircase takes centre stage and walls alternate between freshly painted white and exposed brick for a look that is classic New York warehouse. »





A home is a place of accumulated memories



THIS PAGE: photograph of a Yanomami boy by VALDIR CRUZ. OPPOSITE PAGE, CLOCKWISE FROM TOP LEFT: pair of 'PK22' chairs and sofa by POUL KJÆRHOLM, manufactured by E Kold Christensen; vintage 'Wassily' chair by MARCEL BREUER; vintage Moroccan Beni Ourain rug, 1920s Mexican church bench; artwork from Thicket Assemblage series by ROBERT KELLY. Daybed from flea market in New York; photograph above by VALDIR CRUZ; 19th-century Mennonite workbench; photographic works by SHIRINE GILL. In the office, LE CORBUSIER'S 'LC2' sofa and EAMES office chair; portrait of a young Georgia O'Keeffe by ELIZABETH PEYTON. In the artist's Long Island studio, black paintings from Kelly's Palos Quemados series; black-and-white painting is an unfinished work; African stool.



« To create the shiny floors, Kelly and his assistant took on the major task of whitewashing and coating the furniture-grade birch plywood with water-based polyurethane, a testament to his own investment in the place. For him, everything has to resonate on a personal level, from the Danish furniture he found on his travels in the 1970s to the exotic objects from Mexico, Thailand and North Africa. “A home is a place of accumulated memories,” says Kelly, “where both solitude and shared intimacy are deeply rooted and have a continuity and comfort.”

Kelly grew up in Santa Fe, New Mexico, a unique place rich in culture and infused with Spanish and Native American heritage. He still has a strong connection with Santa Fe’s vast space and big skies, its adobe walls and four distinct seasons, despite having lived so long in New York. “When you live with memories from childhood and travelling, the furniture, objects and art create a home with soul,” he says. “They become part of the story and your approach to art as well as life.”

Art and life are one and the same for this couple. Kelly’s work has been included in collections at the Whitney Museum of American Art, among others. “We inspire each other by sharing and giving continual attention to our mutual love of art, culture and travel,” says Kelly. “The roots run deep in building this memory bank together.” *IL*
 Visit robertkellystudio.net; shirinegill.com.



In the main bedroom, bed from DESIGN WITHIN REACH; Gbanaian fabric as bedspread; SHIRINE GILL photographs.



SEE MORE ONLY AT
VOGUELIVING.COM.AU



CLOCKWISE FROM TOP: Robert Kelly; painting from his Mimesis series. Kitchen by Nasser Abari; black granite benchtop from WALKER ZANGER; SUB-ZERO stove, MIELE hood; Kelly’s Mimesis LXV (Weatherman); EILEEN GRAY ‘Roquebrune’ chairs. Kelly in his studio; Le Corbusier’s ‘LC2’ chairs. Classic New York fire escapes outside. KAARE KLINT ‘Safari’ chairs; ISAMU NOGUCHI lamp. Old Mexican church bench; Robert Kelly artworks. Details, last pages.